

FORMULATION OF COCONUT SHELL EXFOLIATOR FOR FACE SCRUB



EXFOLIATORS: Natural Exfoliating agents are used to remove dead cells from the surface of skin and improve blood circulation, giving renewed and glowing skin. It keeps face free from dirt, collected sebaceous secretions also improves the skin appearance Exfoliators removes dull flaky skin, evens skin tone and diminishes the look of fine lines to reveal radiance. Natural exfoliation spheres gently exfoliate and deep clean skin while protecting and nourishing it at the same.

Umang Pharmatech manufactures **Sprayspheres SE® beads** contain natural products specially used for exfoliation.

EXFOLIATION BENEFITS:

- Removal of dead skin cells
- Smoother, firmer skin
- Even-toned complexion
- Refined pores
- Reduces fine wrinkles, hyperpigmentation and scars
- Stimulates blood flow
- Allows for better absorption of moisturizers and serums.

COCONUT SHELL EXFOLIATORS :

Coconut shell exfoliator is a natural remedy that reduces lines and aging signs on skin, and get a glowing and healthy again. Coconut shell is a natural exfoliant and effectively cleans, heals, moisturises and rejuvenates the skin.

Coconut Shell Powder is a skillfully ground of natural crushed shells(coconut) grounded into fine powder which will act like a scrub in your

product.It is the perfect addition to tropical themed products and products intended for delicate exfoliation.

INCI NAME:

Cocos Nucifera (Coconut) Shell Powder

PHYSICAL AND CHEMICAL PROPERTIES

Appearance- Free flowing brown colored spheres.

Solubility – Practically insoluble in water

Bulk Density - NLT 0.6 gm/cc

pH Value (1.0% Slurry) - 5.0 to 8.0

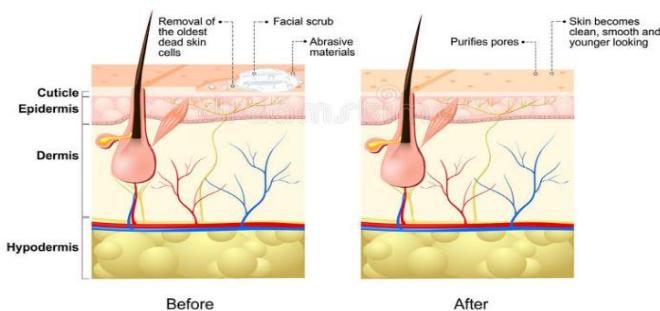
Loss on drying - NMT 8.0%

KEY PROPERTIES OF COCONUT SHELL EXFOLIATORS

- Does not disappear on gentle rub
- Preservative Free.
- Non GMO
- Provides Soft to mild Exfoliation
- Composition has GRAs status.

- Only approved synthetic & natural colors used
- Provide visual effects
- It is natural, non-toxic, non-comedogenic and non-allergenic properties and also biodegradable.
- Soft but effective abrasive, exfoliates naturally restore skin's beauty

EFFECT OF COCONUT SHELL EXFOLIATION IN FACE SCRUB:



Coconut shell exfoliators makes a great exfoliant in Facial scrub . Coconut shell exfoliators do not dissolve in water, which makes them good at scrubbing away dead skin cells. Scrubs away dead skin cells.

Helps removing black heads, resulting into smooth skin texture.It also sucks out impurities of the skin.

Coconut shell exfoliator helps to remove acne scars, dark spots, blemishes and hyperpigmentation. It also helps lighten the skin by gently exfoliating it.

Coconut shell exfoliator balances excess oil secretion and closes the open pores.

FORMULATION PROCEDURE:

Step I: Beeswax is melted in a container by using water bath to a temperature of about 70° C. Then mineral oil is added to the melted beeswax. This is mixture A. **Step II:** In another container, water is heated to a temperature of about 70° C and borax is dissolved in it. This is mixture B. Mixture B

(aqueous phase) is added slowly to mixture A (Oily phase) along with stirring. Stirring is carried out until a creamy emulsion is formed.

Step III: Finally, perfume is added to the preparation when it attains a temperature of about 40°C. Coconut shell exfoliator is added at the end of manufacturing at moderate temperature and at slow stirring. Shearing or other mechanical stresses should be avoided all manufacturing and filling process.

DOSAGE: 0.5 % to 2% for visual effect and up to 10 % for colour or active delivery

STORAGE: Temperature between 5 ° C - 25° C

FORMULATION TIP

Face Scrub

Ingredient	Qty(%ww)	Role O/Ing
White beeswax	20g	Emollient
Mineral oil	(phase A) 50gm	Lubricant
Perfume	q.s (0.5)	Odour
D.W	28.8gm	Vehicle
Borax	(phase B) 0.7gm	Buffer
Coconut shell Exfoliator	0.5-2%	Scrubbing agent

KEY WORDS: Exfoliate ,peel off ,flake off ,throw out, shed off ,scrap ,eliminate ,rub ,Exfoliators beads , Scrub beads ,Natural Exfoliators ,Cosmetic beads for aesthetic effects .

PARTICLE SIZES OF EXFOLIATOR BEADS

XS = Extra Small = 0.2 mm

VVS = Very Very Small = 0.2 - 0.3 mm

VS = Very Small = 0.3 - 0.6 mm

S = Small = 0.6 - 0.8 mm

M = Medium = 0.8 - 1.4 mm

L = Large = 1.4 - 2.0 mm

XL = Extra Large = 2 - 5 mm